

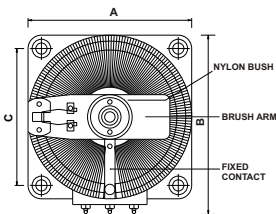
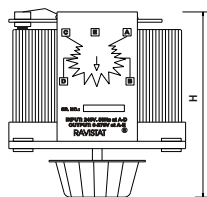
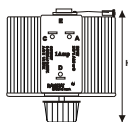
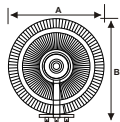
RAVISTAT® Variable Auto Transformer

Variable Transformer Single Phase, Open/ Flush/ Panel Mounting

1Amp Variac



Model: 1F-1



3Amps



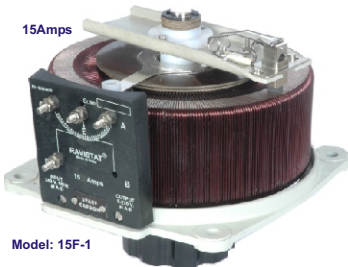
Model: 3F-1

8Amps



Model: 8F-1

15Amps



Model: 15F-1

Dimensions in mm (Approx).

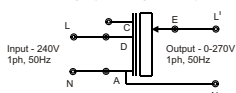
RAVISTAT Variable Auto Transformer Model: F-1
Single phase, Open/Flush Type, Panel mounting.
Input: 240V 50/60Hz. Output: 0-270V

TYPE	AMP	A	B	C	H	MAX V.A.	Ø	Approx Wt. In KG
1F-1	1Amp	85	105	-	100	270	4	1,600
2F-1	2Amp	110	140	92	125	540	7.5	2,900
3F-1	3Amp	110	140	92	135	810	7.5	3,300
4F-1	4Amp	175	195	146	150	1080	10	6,200
6F-1	6Amp	175	195	146	165	1620	10	6,600
8F-1	8Amp	175	195	146	175	2160	10	7,800
10F-1	10Amp	175	195	146	185	2700	10	8,500
15F-1	15Amp	220	250	176	180	4050	10	12,500
20F-1	20Amp	220	250	176	190	5400	10	15,000
28F-1	28Amp	295	325	238	230	7560	10	22,500

Note: Not to scale.
Maximum operating temperature = 45 °C,
Ø = HOLE, 2-2Amps Max capacity.

Maximum Current	1A	2A	3A	4A	6A	8A	10A	15A	20A	28A
Continuous Current	1A	1.8A	2.8A	3.8A	5A	6.5A	8A	12A	17A	25A

SINGLE PHASE VARIAC



CONNECTION ARRANGEMENT



RAVI ELECTRICALS PVT. LTD.
MFG EXPORTER OF VARIABLE AUTO TRANSFORMER

Installation and Safety Instructions

1. Installation, commissioning and maintenance should only be carried out by suitably qualified personal.
2. Read all of the Instructions carefully before you use the Transformer.
3. The input must always be applied across the appropriate Terminals.
Never connect the Variac Auto Transformer in series with the load.
4. The Variac Auto Transformer should be properly earthed using the earth stud.
5. Variable Transformer Operate at mains Voltage.
DO NOT EXCEED THE MAXIMUM VOLTAGE AND CURRENT RATING
6. This Transformer is not designed to provide mains isolation.
7. Please note that when connected to the electrical supply the terminal brushes and track surface are at mains Voltage which is potentially lethal.
8. The Carbon brush should be inspected for damage or wear, faulty over worn brushes will result in damaging the windings.